

The Emirates Natural History Group in Al Ain Newsletter

Fantastic Plastic?

Bovine animals and camels tend to eat anything. They cannot digest plastic; so when they eat it, it builds up in their stomach and calcifies, leading to a lightweight but hard blockage in their digestive system. This leads to a slow and miserable death.



Continued on Page 2

AGM Notification

Notice is hereby given of the Al Ain ENHG Annual General Meeting; scheduled for 26 November at the Danat Resort, 07:30 pm for 08:00 pm. We will also conclude the adjudication of our Photo Competition (as was announced separately via email) at this event.

We look forward to seeing you there! ☺

جمعية الامارات للتاريخ الطبيعي - العين



Inside This Issue:

FANTASTIC PLASTIC?	1
AGM NOTIFICATION	1
PAST/UPCOMING EVENTS	1
THE LIBRARY	2
MARAWAH ISLAND	3
AL AIN ARCHAEOLOGY	4
DITHOLO NATURE RESERVE	4
MEETING LOCATIONS	5
LOCATION DETAILS	5
COMMITTEE MEMBERS	5

Past/Upcoming Events:

Committee Meeting

1 October 2013 Islamic Institute 7:30 pm

Recce: Preparation for Fujairah Field Trip

4 October 2013 Foah Petrol Station (Coffee Pot)

General Meeting: Qattara Oasis from Past to Present

8 October 2013 Danat Resort 7:30 pm

General Meeting: Coral Reefs and Research in UAE Waters

22 October 2013 Islamic Institute 7:30 pm

Field Trip: Wadi Tawaya

1 November To be confirmed

General Meeting: TBD

12 November Danat Resort 7:30 pm

Field Trip: Fujairah

29 November Foah Petrol Station

From Page 1 – Fantastic Plastic?



The consequences of plastic pollution are widespread, not only impacting land based animals, but also threatening global marine environments. The world's largest concentration of floating plastic waste has accumulated in the North Pacific, between Hawaii and the west coast of the US, and is estimated to be twice the size of Texas. A second, equally large, polluted area has now been confirmed to exist in the North Atlantic Ocean.

Such seaborne pollution includes discarded fishing nets; please see the following link's video. This video relates to a hump backed whale that was caught up in a fishing net and the impressive display of "thanks" displayed by the whale after being released by Samaritans. http://www.youtube.com/watch_popup?v=EBYPlcSD490

The PlasticNotSoFantastic (PNSF) Expedition consists of a global road trip originating from the UAE and heading for the rest of the world; it is aimed at raising plastic pollution awareness. The PNSF Expedition does not advocate the abolition of plastic products; however it condemns the irresponsible consumption and disposal of single use plastics. Whilst not advocating total plastic condemnation, the PNSF Expedition has the goal of raising plastic pollution awareness and its toxic impacts on humans, the environment and worldwide wildlife.

Please visit: www.pnsfexpedition.com for more information.

The PNSF Expedition believes that UAE attitudes are slowly changing as regards waste creation and management. Nevertheless the UAE remains one of the highest per capita producers of waste in the world. The PNSF team strongly believes that there is still considerable progress to be made. Unfortunately, the UAE's environmental difficulties have often been highlighted in a negative light by the international media, rather than focusing on the positive progress (which it is hoped the UAE will make over the coming years in relation to meeting the challenges posed in attempting to reach environmental sustainability). ✕

Please remember to renew or initiate your ENHG subscription and to support the Editor by providing an article or artifact (such as an unusual photograph or two) to place into our next newsletter!

The Library

The library is housed in our ENHG room in the Islamic Institute. Members and non-members can access the catalog on-line under www.librarything.com/catalog/enhg.

The lending collection is available to members on a short term loan basis. Anyone is welcome to contact Verena (see the contacts information on page five) and she will make the arrangements for book access. ✕

Marawah Island

Credit: Wikipedia (the same terms as their ShareAlike License apply) and Google Earth.

Marawah is located 100 km west of the city and capital, Abu Dhabi, the island is 15 km north of the Khor al Bazm lagoon along the Abu Dhabi coastline.



According to recent research the island formed from limestone dating back 2,588,000 to 11,700 years ago, spanning the world's recent period of repeated glaciations.

The privately-owned island is around 13 km from east to west and about 5.5 km from north to south. The west first became aware of the island around 1829 when the Dutch East India Company recorded its location in a nautical survey of the Persian Gulf.

Although privately owned, the island is a key center of archaeology; the Abu Dhabi Islands Archaeology Survey completed a preliminary survey of the island in 1992. Thirteen sites were discovered, dating from the New Stone age (10 200 years ago) to 12-13 AD.

The oldest human skeleton ever found in the region amid the remains of Neolithic buildings and over two hundred flint tools was found in 2004. DNA was extracted from teeth that were recovered from the site, and it was determined that the remains were about 7,500 years old.

That shows one that the UAE has a rich history to discover. Readers wishing to further research this island might like to visit the following link:

<http://www.adias-uae.com/marawah.html> ✕



Ditholo Nature Reserve

The Ditholo Nature Reserve in South Africa is to be found to the North of Pretoria.

The above photograph illustrates how a field mouse managed to get itself trapped inside a bottle that was lying in the reserve.

This is another example of how our trash impacts upon nature.

Can you guess at what the following image depicts and (if you are exceptionally knowledgeable) where it was taken? Please email the Editor with your guesses at:

newsletter@enhg.org ✉



Al Ain Archaeology

Credit: Wikipedia (the same terms as their ShareAlike License apply).

The Hili Archaeological Park is the location of an Al Ain bronze age site (dating back up to 3 300 years BC). Hili is the largest Bronze Age site in the UAE. The site is around twelve kilometer from Al Ain city near the Dubai highway.



Credit: Styve Reineck and Google Earth

Remains that have been found at the site include settlements, tombs, wells and Iron Age artifacts (the latter dating back around 1 000 years).

A part of the park is in a protected area. Finds from the site have been placed in the Al Ain National Museum in central Al Ain.

Readers might wish to access the following link to the Abu Dhabi Government web site for more information.

https://www.abudhabi.ae/egovPoolPortal_WAR/app/manager/ADeGP/Citizen?_nfpb=true&_pageLabel=p584&lang=en&did=163136 ✉

We wish to place additional photographs having a nature theme and then ask Readers to identify "What is it"? Do you have a submission that you would like to make in this category?



Danat Resort Hotel

Meeting Locations

The Al Ain Chapter of the ENHG meets in two locations, the Danat Resort Hotel (for General Meetings) and the Emirates University Islamic Institute (for Committee Members).

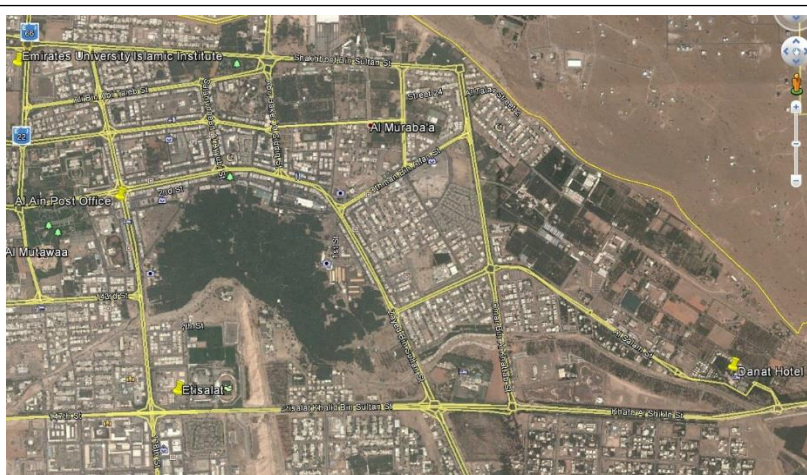
All members are invited to attend either set of meetings.

Location Details (Courtesy of Google Earth)



Islamic Institute

www.enhg.org



Danat Resort GPS location : 24 12 29.32N 055 48 15.69E
Islamic Institute GPS location: 24 13 44.80 N 055 44 59.50 E

Committee Members:

Chairperson

Brigitte Howarth Brigitte.howarth@gmail.com 050 619 7316

Vice Chairperson

Leslie Butler Lesiebutler@yahoo.com 050 112 1637

Treasurer

Joseph Mansour Josephmansour@yahoo.com 050 130 4660

Library

Verena Davies Verena.davies@gmail.com 050 583 4049

Newsletter Editor

Alex Schmarr newsletter@enhg.org 055 834 5079